



Eidesvik



“Viking Athene”

VS 470 MK II

Signal letters LAJX
 IMO no 9366809
 Design VS 470 MKII
 Built 2006
 West Contractors AS, hull no 27
 Home portHaugesund
 GSM Telephone 958 45 285
 GSM Fax 477 69 831
 Mini M 764564274 / 764564275
 Mini M Fax / Data 764564276 / 764564277
 Inmarsat"C" 1 & 2 425879310 / 425879311
 V-sat Telephone 1 & 2 53 44 81 25 / 53 44 81 26
 V-sat Fax 53 44 81 27
 MMSI 258793000
 Owned by Eidesvik Shipping AS
 Operated by Eidesvik AS
 Telephone : +47 53 44 80 00
 Telefax : +47 53 44 80 01

CLASS NOTATION

Det Norske Veritas

+ 1A1 -Standby Vessel, SF,Clean, Dynpos AUTR , E0,FiFi I,
 LFL*, with register notation dk (+),hl 2,5 , Unlimited trade,
 Equipped for A3 area acc. To GMDSS rules,

PRINCIPAL DIMENSIONS

Length o.a. 73,40m
 Length b.p.p. 64,00m
 Breadth mld 16,60m
 Depth to main deck 7,60m
 Draught summer Max 6,42m
 Free board Min 1,20m
 Length, cargo dk Max 53 m
 Breadth, cargo dk Max 13,8m
 Cargo Deck Area, Max 700sqm
 Cargo Rail height 2,8m
 Gross tonnage Approx 2500 T
 Dead weight Approx 3550T

CAPACITIES

	M3	Sp.gr.	MT
Fuel oil	1050	0,86	900
Potable water	775	1,00	775
Drill water/ballast	715	1,03	730
Liquid mud / Brine	1070	2,50	2680
Base Oil, part of liquid mud.....	210	0,87	183
Dry bulk.....	340	2,40	816
Methanol (Stainless steel tanks)....	190	0,80	152
Max deck load.....	Approx 1500T, c.g 1m above 1 st deck		

Nitrogen generator with bottle bank for purging methanol tanks and pipes

Tank washing system with hot and cold water. Chemical injection in washing water for mud, brine and base oil tanks.

Note! Separate pumps- and piping system for all types of liquid cargo.

MACHINERY AND PROPULSION

Main engines:

MakeMAK
 Type/No.MAK 8M25
 Rating 2 x 2400 kW

Propellers:

Make / TypeScana Volda / ACG 68/600 K
 Diam. 2900mm
 Rpm. 220 RPM

Aux. Engine:

Make Caterpillar
 Type / Rating 2 x 3406TA – 345 KW
 Generator..... 2 x Caterpillar SR4 – 450
 Cap. 2 x 400 KVA

Emergency Aux.

Make Caterpillar
 Type / Rating 1x 3354T – 80,5 BKW
 Generator..... 1x Stamford UCM274C
 Cap..... 1 x 92 KVA

Shaft Generators:

Make/Type Leroy Somer / NRW 53 VS S7/6p
 Cap. 2 x 1800 KVA / 450V, 60Hz

SIDE THRUSTERS

Bow thruster	2 x Brunvoll FU-63-LTC-1550
Rating.....	735 kW / 1000HP
Stern thruster	2 x Brunvoll FU-63-LTC-1550
Rating.....	735 kW / 1000 HP

DISCHARGE RATE

	M3/Hour	Bar	Type Drive/Pump
Fuel Oil.....	2 x 100.....	7,6.....	El./centrifugal 2 speed
Fresh Water	2 x 100.....	9.....	El./centrifugal 2speed
Drill Water	2 x 100.....	9.....	El./centrifugal 2speed
Liquid Mud.....	2 x 100.....	22.5.....	El./eccentric screw.
Brine.....	2 x 70.....	22.....	El./eccentric screw
Base Oil	1 x 90.....	7,6.....	El.driven / Centrifugal
Methanol	2 x 75.....	7.....	Hydr.driven / Centrifugal
Bulk Compr.	2 x 30	6.....	

Loading and discharge stations aft and
Amidships for all types of liquid cargo and dry bulk

DECK EQUIPMENT

Tugger winches.....	2 x RR Brattvåg BWMG
.....	41010 / 10 tons
Capstan(s).....	2 x RR Brattvåg CM
.....	4185 / 9tons
Crane	Hydramarine HMC 1077
.....	Capacity SWL 3 tons 13m
.....	Capacity SWL 1 tons 19m
.....	Radius 1,5 - 12,0 m / 19 m

NAVIGATION

Magnetic Compass	BN 35
GPS.....	2 x Furuno GP 90
Gyro Compass	3 x Simrad GC-80
Auto Pilot.....	Simrad AP9 MK III
Doppler log.....	Furuno DS-80
Radar 3 cm Arpa	Furuno FAR – 2117
Radar 10cm Arpa.....	Furuno FAR - 2137 S
Echo sounder	Furuno FE700
Wind sensor	2 x Deif
Navtex.....	Furuno NX 500
Ecdis	Furuno Telchart-TECDIS
AIS	Furuno AS-100

MANOEUVRING, POSITIONING AND VESSEL MANAGEMENT SYSTEM

Complete integrated manoeuvring, dynamic positioning and vessel management system consisting of:

Dynamic Positioning	Simrad SDP 22
Reference	Fan Beam laser system / MDL MK 4
.....	2 x DGPS / Seatex DPS 116 and 200
.....	Spotbeam / Glonass / Iala / V-Sat
Manual Joystick	Kongsberg Simrad / SJS - OT
Manoeuvring system	Scana Volda ACG 68/600 K

VESSEL MANAGEMENT SYSTEM

Cargo handling and alarm	Aker Elektro IAS
--------------------------------	------------------

FIRE FIGHTING

FI-FI pumps	2 x Eureka 250x 350 OGF
.....	1500 cum/h each at 140 mlc
Powered by:	.. Main Engine drive via step-up gir
Monitors, No./cap:	2 off Eureka 200HJF, 1200 cum/h each, one 300cum/H foam in addition
Lenght of throw:	120 m
Hight of throw:.....	50 m
Dispersant system, capacity 10 cubm, 2 off spray booms, Sprinkler system for self protection according to rules	

ACCOMMODATION

Total capacity of 32 bed's, marine crew included. All cabins with toilet and shower. 2 ea. Dayroom, Mess room, Office and Hospital.

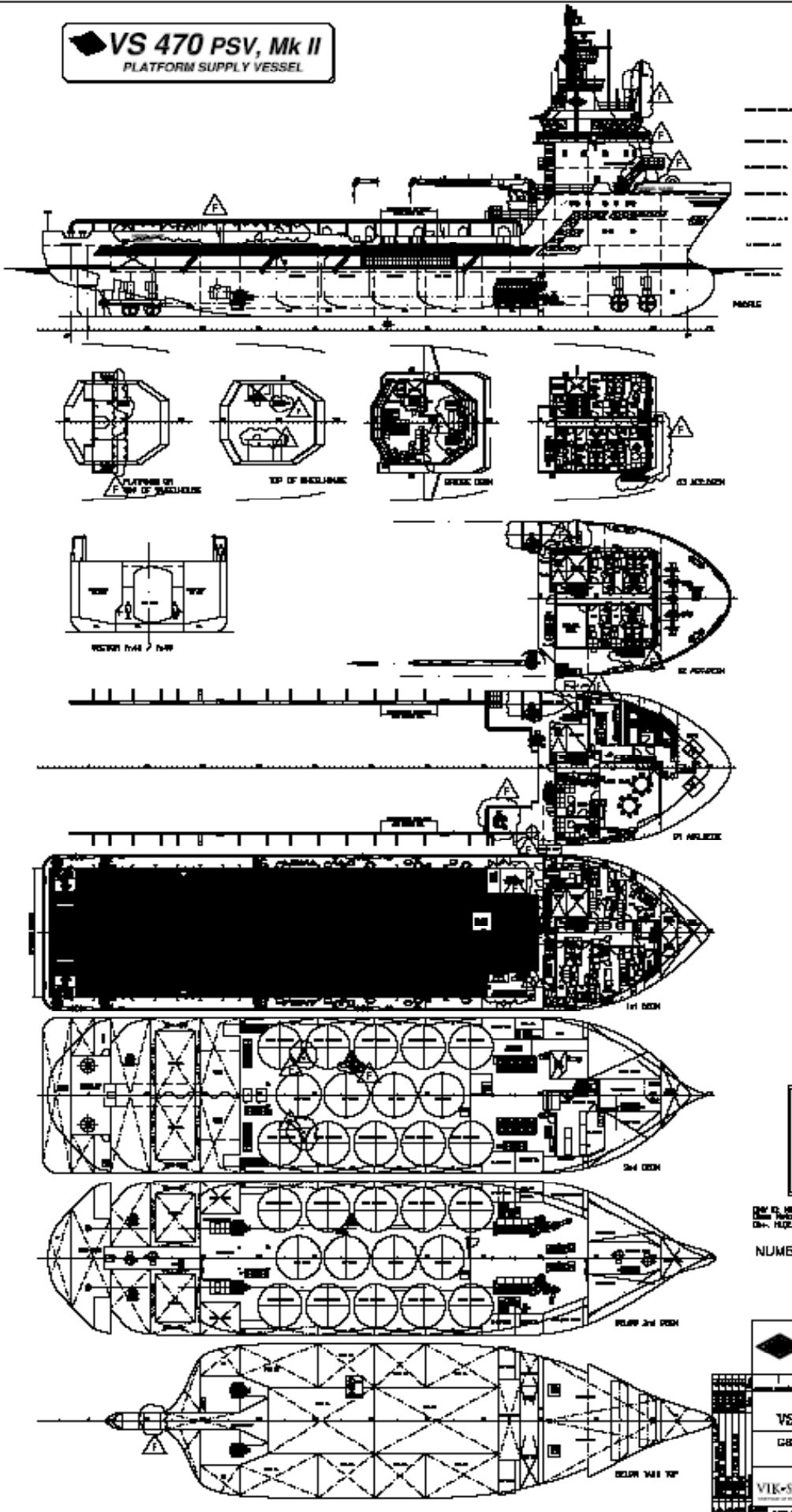
LIFESAVING AND RESCUE EQUIPMENT

MOB-boat	Norsafe AS 6.55 MAKO
Dimensions	6.55m LOA / 2.7m Beam
Capacity.....	15 persons
Engine.....	Steyr 212 HP Turbo
Speed	30 Knots
Liferafts	6 of 16 man
Make	Viking

COMMUNICATION

Radio Plants GMDSS.	1 x Furuno FS 1570 / 400W
VHF Stationary GMDSS.	1 x Furuno FM – 8800S
VHF Stationary GMDSS.	1 x Furuno FM – 8800D
VHF portable GMDSS	3 x Jotron 50
Inmarsat "C" GMDSS.....	2 x Furuno Felcom 15
VHF Stationary	2 x Sailor VHF RT-2048
UHF portable	3 x Motorola GP GP340
UHF Stationary	1 x Motorola GM 360
V-Sat.....	1 x Telenor
EPIRB	1 x Tron 40 S MK II
Radartransponder.....	2 x Tron SART 9 GHZ



VS 470 PSV, Mk II
PLATFORM SUPPLY VESSEL



PRINCIPAL PARTICULARS:
 LENGTH OVER ALL: appr. 73.40 m
 LENGTH BETW. PERP.: 64.00 m
 BREADTH MLD.: 18.00 m
 DEPTH TO 1st DECK: 7.00 m
 FRAM. SPACING: 0.90 m
 BALE LENGTH (L): 80.00 m

DESIGNER: VIK-SANDVIK
 CLASSIFICATION: Lloyd's Register, Specialty Vessel (S), 25, 26, R-R 1, Special A11
 CODE: 112225, 1711, 0120

NUMBER OF PERSONS : 32

			
VS 470 PSV Mk II		GENERAL ARRANGEMENT	
VIK-SANDVIK		WESTON	
1:1000		101	
3475/8499		7	
1.00-0101		1/1	